

Priest Rapids Hydroelectric Project (P-2114)

**SUMMARY OF 2010 WATER QUALITY
MONITORING RESULTS WITHIN THE PRIEST
RAPIDS HYDROELECTRIC PROJECT**

By Carson Keeler

for

Public Utility District No. 2 of Grant County
P.O Box 878
Ephrata, WA 98823

February 2011

Executive Summary

This report provides results and summaries of water quality monitoring efforts that the Public Utility District No. 2 of Grant County, Washington (Grant PUD) conducted in 2010 in accordance with conditions of the 401 Water Quality Certification (WQC) issued by the Washington State Department of Ecology (WDOE) and the WDOE-approved Quality Assurance Project Plan (QAPP) for the Priest Rapids Hydroelectric Project (Project). Water quality parameters monitored in 2010 included total dissolved gas (TDG [mm Hg]), water temperature (°C), dissolved oxygen (DO [mg/L]), pH (units), and turbidity (NTU). Monitoring methods and quality assurance/quality control (QA/QC) procedures followed protocol described in the QAPP (Hendrick 2009). Section 6.7.3 of the 401 WQC (WDOE 2007) requires Grant PUD to provide the results of the monitoring efforts as well as a summary of those results by March 1 of the year following the monitoring activities.

Water quality monitoring conducted in 2010 occurred at Grant PUD's Fixed Site Water Quality Monitoring (FSM) stations. The purpose of monitoring water quality parameters within the Project was to continue to provide information on water quality conditions and to verify compliance with applicable water quality standards and conditions within the 401 WQC and QAPP.

Results of Grant PUD's 2010 water quality monitoring effort indicated no exceedances of the 110 percent TDG standard during the non-fish spill season. In general, water temperatures peaked during the months of July through September with some daily maximum values greater than 20°C. In accordance with Section 6.5.2 of the 401 WQC (WDOE 2007), Grant PUD will conduct temperature modeling in 2013 to determine Grant PUD's contribution, if any, to water temperature values recorded from 2008–2012 that were above WDOE water quality standards.

Grant PUD's 2010 water quality periodic monitoring efforts at each FSM station indicated DO between 8.9 and 13.9 mg/L, pH from 7.5 to 8.4 units, and turbidity between 0.0 and 6.8 NTUs. Grant PUD will continue its hourly TDG and water temperature monitoring as well as periodic DO, pH, and turbidity monitoring at its FSM stations in 2011, according to conditions contained in the 401 WQC (WDOE 2007) and QAPP (Hendrick 2009).

Table of Contents

1.0	Introduction.....	1
2.0	Quality Assurance Project Plan	1
2.1	Priest Rapids Project Description	2
2.1.1	Wanapum Development.....	2
2.1.2	Priest Rapids Development.....	2
2.2	Regulatory Framework	5
2.2.1	Total Dissolved Gas.....	5
2.2.2	Water Temperature	5
2.2.3	Dissolved Oxygen and pH	6
3.0	Fixed Site Monitoring Program	6
4.0	Results.....	6
4.1	Description of 2010 Flow Characteristics.....	7
4.2	Total Dissolved Gas.....	7
4.2.1	Fish-Spill Season	7
4.2.2	Non-Fish Spill Season.....	8
4.3	Temperature	10
4.3.1	Temperature QA/QC.....	13
4.4	Dissolved Oxygen, pH, and Turbidity	13
5.0	Conclusions.....	14
	Literature Cited.....	15

List of Figures

Figure 1	Priest Rapids Hydroelectric Project Boundary and associated Transmission Line Right-of-Way, mid-Columbia River, WA.	3
Figure 2	Aerial photograph of Wanapum Dam, mid-Columbia River, WA.	4
Figure 3	Aerial photograph of Priest Rapids Dam, mid-Columbia River, WA.	4
Figure 4	Comparison of 2010 vs. previous ten-year average of mean daily discharge values as measured at the U.S. Geological Survey streamflow gage #12472800 located below Priest Rapids Dam, mid-Columbia River, WA.	7
Figure 5	Daily maximum total dissolved gas values from the 2010 non-fish spill season, Priest Rapids Hydroelectric Project, mid-Columbia River, WA.	10

Figure 6	Daily maximum water temperature values recorded at each fixed-site monitoring station in 2010, Priest Rapids Hydroelectric Project, mid-Columbia River, WA.	12
Figure 7	Seven-day rolling average of daily maximum temperatures recorded at each fixed-site monitoring station in 2010, Priest Rapids Hydroelectric Project, mid-Columbia River, WA.	12

List of Tables

Table 1	Overview of Grant PUD’s total dissolved gas data set during 2010 non-fish spill season.	8
Table 2	Summary of hourly total dissolved gas measurements from each fixed-site monitor during the 2010 non-fish-spill season, Priest Rapids Hydroelectric Project, mid-Columbia River, WA.	9
Table 3	Number of 2010 non-fish spill season total dissolved gas variances, Priest Rapids Hydroelectric Project, mid-Columbia River, WA.	9
Table 4	Overview of water temperature data set during 2010.	10
Table 5	Summary of hourly temperature measurements from each fixed-site monitor during 2010, Priest Rapids Hydroelectric Project, mid-Columbia River, WA.	11
Table 6	Temperature QA/QC data collection.	13
Table 7	Dissolved oxygen, pH, and turbidity grab-sample results in 2010, Priest Rapids Hydroelectric Project, mid-Columbia River, WA.	14

List of Appendices

Appendix A	Omitted Data Explanations 01/01 – 03/31/10 and 09/01 – 12/31/10.	A-1
------------	--	-----

Terms and Abbreviations

1-DMax	maximum daily temperature
7-DADMax	7-day average of the daily maximum temperatures
DCP	data collection platform
DO	dissolved oxygen
EPA	Environmental Protection Agency
Grant PUD	Public Utility District No. 2 of Grant County, Washington
FERC	Federal Energy Regulatory Committee
FSM	fixed-site monitoring
kcf/s	thousand cubic feet per second
MW	megawatt
mg/L	milligrams per liter
mm Hg	millimeters of mercury
NTU	Nephelometric Turbidity Unit
Project	Priest Rapids Hydroelectric Project
QAPP	Quality Assurance Project Plan
QA/QC	quality assurance/quality control
TDG	total dissolved gas
TMDL	total maximum daily load
USGS	U.S. Geological Survey
WAC	Washington Administrative Code
WDOE	Washington Department of Ecology
WQC	water quality certification

1.0 Introduction

Public Utility District No. 2 of Grant County, Washington (Grant PUD) owns and operates the Priest Rapids Hydroelectric Project (Project), located along the Columbia River in central Washington. The Project is authorized by the Federal Energy Regulatory Commission (FERC) under Project No. 2114¹ and includes the Wanapum and Priest Rapids developments. A 401 Water Quality Certification (WQC) for the operation of the Project was issued by the Washington State Department of Ecology (WDOE) on April 3, 2007 and amended on March 6, 2008. The WQC's terms and conditions were directly incorporated into the FERC license to operate the Project on April 17, 2008 (FERC 2008). Various sections of the 401 WQC require Grant PUD to monitor total dissolved gas (TDG [mm Hg]), water temperature (°C), dissolved oxygen (DO [mg/L]), and pH (units) throughout the Project (WDOE 2007). Section 6.7.3 of the 401 WQC requires Grant PUD to provide WDOE with water quality monitoring results, along with a summary report, by March 1 of each year.

The following report provides the results of Grant PUD's water quality monitoring efforts in 2010 (including a summary of those results) according to Section 6.7.3 of the 401 WQC. Water quality data were collected, analyzed, and reported. Additionally, instruments were maintained as defined in Grant PUD's WDOE-approved Quality Assurance Project Plan (QAPP; Hendrick 2009), which contains elements of sampling frequency, procedures, equipment, analytical methods, quality control, data handling and assessment procedures, and reporting protocols (see Section 2).

2.0 Quality Assurance Project Plan

The water quality data summarized in this report were collected in accordance with Grant PUD's WDOE-approved QAPP, titled "*Quality Assurance Project Plan for Monitoring Selected Water Quality Parameters within the Priest Rapids Hydroelectric Project*" (Hendrick 2009). The QAPP was approved by WDOE on January 30, 2009 and FERC on July 16, 2009. The QAPP provides details on water quality monitoring methods that Grant PUD plans to implement to meet conditions of the 401 WQC issued by WDOE. Water quality parameters that are being monitored under the QAPP include TDG, water temperature, DO, pH, and turbidity. Water quality monitoring conducted under the QAPP was performed via Grant PUD's Fixed-Site Water Quality Monitoring (FSM) program. Information provided in the QAPP includes the following:

- Purpose and objectives of the FSM program
- List of parameters to be monitored
- Organization and schedule
- Data quality objectives
- Descriptions and maps of the monitoring locations
- Monitoring methods, procedures, and equipment
- Analytical methods

¹ 123FERC ¶61,049

- Quality control procedures, including descriptions of calibration, maintenance, and data handling and assessment procedures
- Reporting protocols
- Provisions for adaptive management

The purpose of Grant PUD's FSM program is to continue to provide information on water quality conditions within the Project, as well as verify compliance with applicable water quality standards and conditions within the 401 WQC. Implementation of the QAPP helps assure that water quality data collected by the FSM program are of sufficient quality. Adaptive management provisions in the QAPP helps determine potential changes to monitoring methods, locations, etc. that may be needed and annual updates will be made to the QAPP as necessary and subject to WDOE and FERC approval. The current QAPP for the FSM program can be found at: <http://www.gcpud.org/naturalResources/fishWaterWildlife/waterQuality.html>.

2.1 Priest Rapids Project Description

The Project is located on the Columbia River in central Washington state (Figure 1). From its headwaters in Canada, the Columbia River extends for 1,214 miles with 460 miles in Canada and 754 miles in the United States. The Columbia River watershed drains an area of approximately 258,500 square miles in the Pacific Northwest. The following states and provinces comprise the majority of the Columbia River Basin: Washington, Oregon, and Idaho, the western portion of Montana, the southeastern portion of British Columbia, and small areas of Wyoming, Nevada, and Utah. For additional information regarding the Project, see the QAPP (Hendrick 2009).

2.1.1 Wanapum Development

The Wanapum development consists of a 14,680-acre reservoir and an 8,637-foot-long by 186.5-foot-high dam spanning the river. The dam consists of left and right embankment sections; left and right concrete gravity dam sections; a left and right fish passage structure, each with an upstream fish ladder; a gated spillway; an intake section for future generating units; a downstream fish passage structure in one of the unused intake sections (unit No. 11); and a powerhouse containing 10 vertical shaft integrated Kaplan turbine/generator sets with a total authorized capacity of 1,258 MW (Figure 2).

2.1.2 Priest Rapids Development

The Priest Rapids development consists of a 7,725-acre reservoir and a 10,103-foot-long by 179.5-foot-high dam spanning the river. The dam consists of left and right embankment sections; left and right concrete gravity dam sections; a left and right fish passage structure each with an upstream fish ladder; a gated spillway section; and a powerhouse containing 10 vertical shaft integrated Kaplan turbine/generator sets with a total authorized capacity of 955 MW (Figure 3).

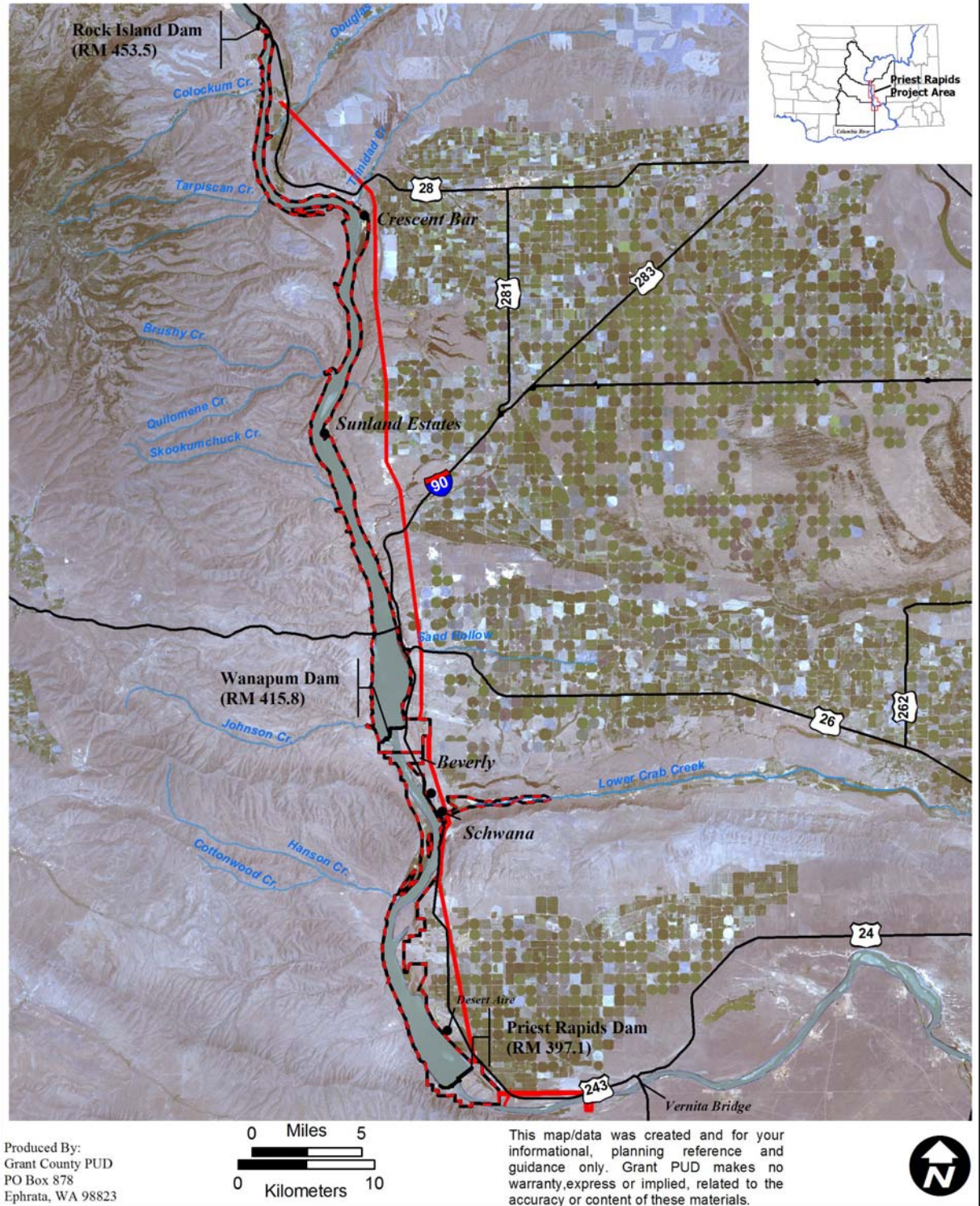


Figure 1 Priest Rapids Hydroelectric Project Boundary and associated Transmission Line Right-of-Way, mid-Columbia River, WA.

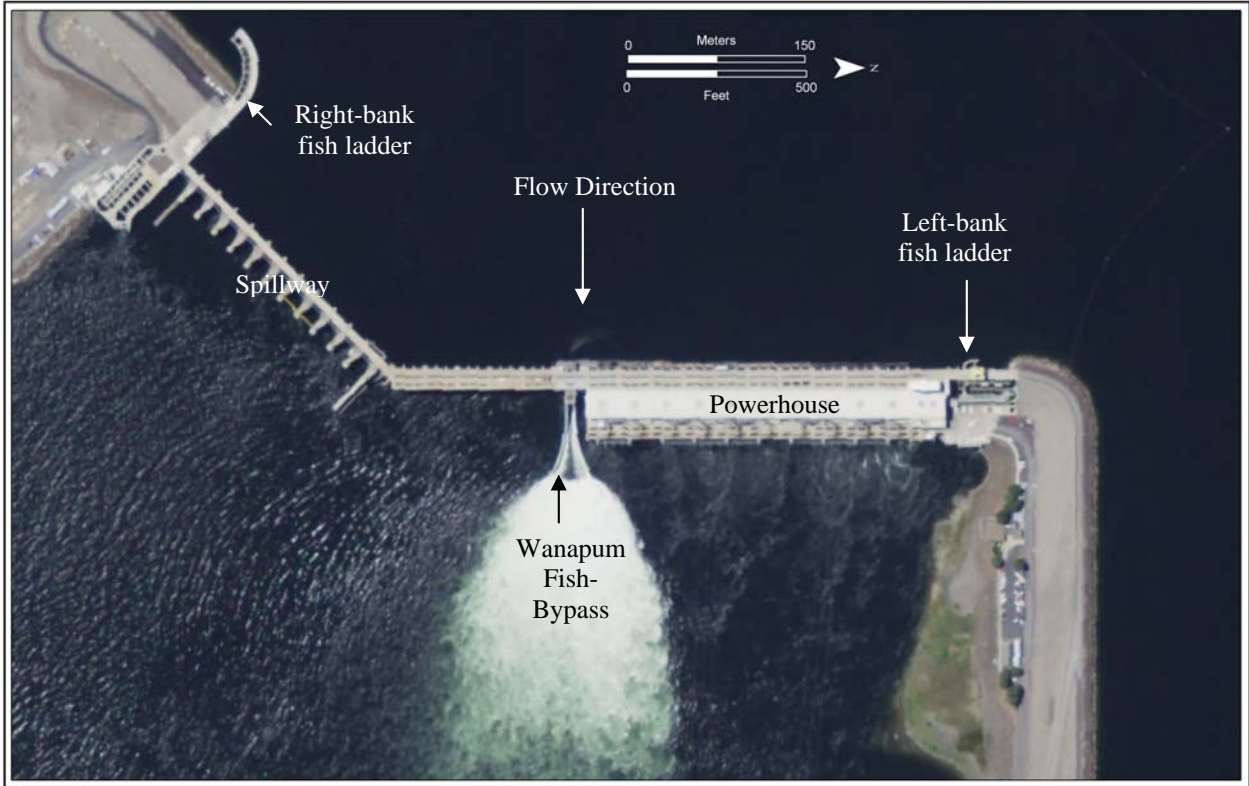


Figure 2 Aerial photograph of Wanapum Dam, mid-Columbia River, WA.

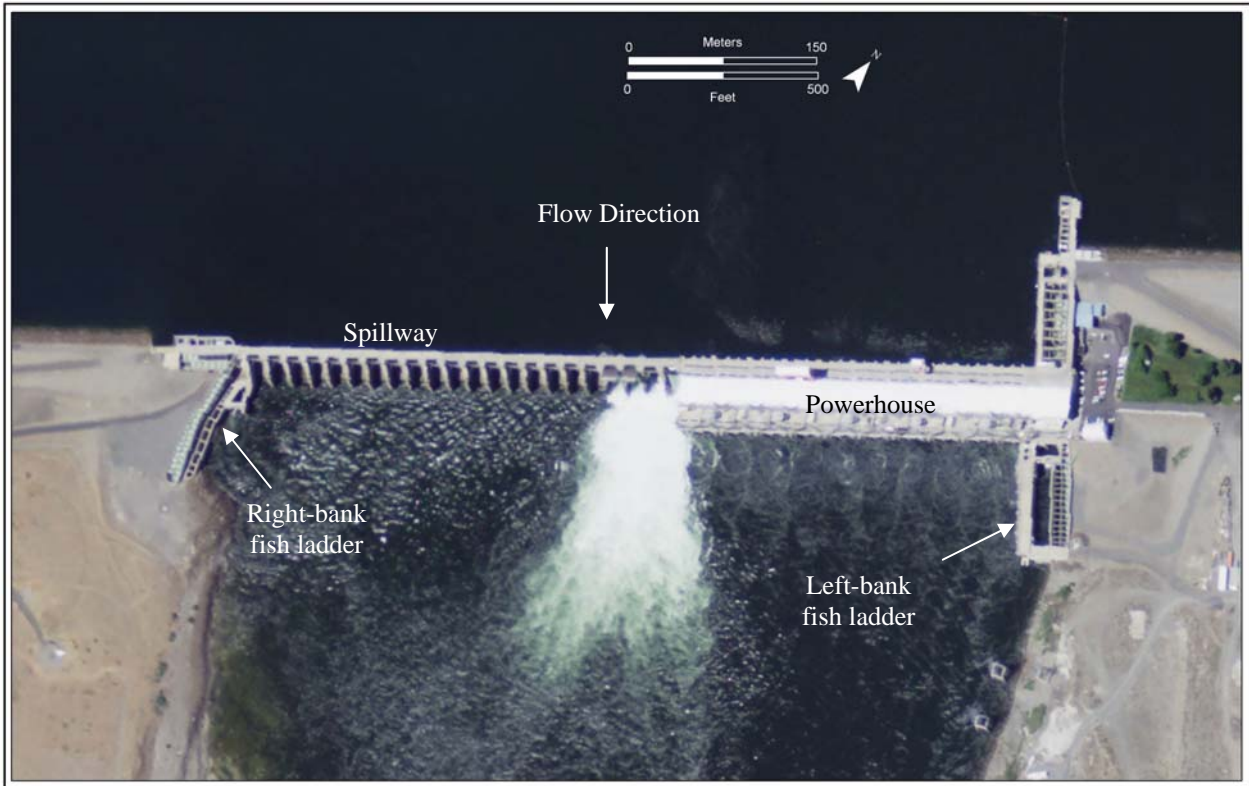


Figure 3 Aerial photograph of Priest Rapids Dam, mid-Columbia River, WA.

2.2 Regulatory Framework

Section 6.0 of the 401 WQC (WDOE 2007) contains water quality conditions that Grant PUD must follow and these conditions require regular monitoring of TDG, temperature, DO, and pH. The following sections detail the water quality monitoring requirements and numeric standards for each parameter monitored.

2.2.1 Total Dissolved Gas

Washington state water quality standards for TDG during the non-fish and fish-spill seasons are established by the WDOE (see Washington Administrative Code (WAC) 173-201A-200(1)(f)). The current standard for TDG (in percent saturation) during the non-fish spill season (September 1 through March 31) is 110 percent for any hourly measurement. The current standard for TDG (in percent saturation) during the fish-spill season (April 1 through August 31) is 120 percent in the tailrace of the dam spilling water for fish and 115 percent in the forebay of the next downstream dam, based on the average of the twelve highest consecutive hourly readings in a twenty-four-hour period. A one-hour, 125 percent maximum standard for TDG also applies throughout the Project during the fish-spill season.

Section 6.4.10(d) of the 401 WQC requires Grant PUD to maintain a TDG monitoring program at its FSM's throughout the year, and that TDG measurements shall occur on an hourly basis. Section 6.4.11(a) states monitoring results shall be made available electronically to the public "...as close to the time of occurrence as technology will reasonable allow." In addition, Section 6.4.11(c) states Grant PUD shall provide WDOE with an annual TDG and fish-spill summary report by October 31 annually (WDOE 2007).

2.2.2 Water Temperature

WAC 173-201A-602 designates the section of the Columbia River within the Project as salmonid spawning, rearing, and migration; therefore, water temperature must remain below 17.5°C, as measured by the seven-day average of the daily maximum temperatures (7-DADMax). When a water body's temperature is warmer than the criteria (or within 0.3°C of the criteria) and that condition is due to natural conditions, then human actions considered cumulatively may not cause the 7-DADMax temperature of that water body to increase more than 0.3°C. In addition, WAC 173-201A-602 provides that temperatures below Priest Rapids Dam shall not exceed a maximum daily (1-DMax) of 20.0°C due to human activities. When natural conditions exceed a 1-DMax of 20.0°C, no temperature increase will be allowed which will raise the receiving water temperature by greater than 0.3°C; nor shall such temperature increases, at any time, exceed $t = 34/(T + 9)$. In 2013, and in accordance with Section 6.5.2 of the 401 WQC (WDOE 2007), Grant PUD will conduct temperature modeling to determine Grant PUD's contribution, if any, to water temperature values recorded from 2008–2012 that were above WDOE water quality standards. Portions of the Columbia River within the Project are currently classified as impaired for temperature under Section 303(d) of the Clean Water Act. Portions of the Columbia River upstream of the Project also are currently classified as impaired for temperature. WDOE has indicated that a Total Maximum Daily Load (TMDL) for temperature is expected to be developed by the Environmental Protection Agency (EPA) that will establish a final wasteload and load allocation for temperature (WDOE 2007).

2.2.3 Dissolved Oxygen and pH

The water quality criteria for DO within the Project require that DO be greater than 8.0 milligrams per liter (mg/L). When DO is lower than the criteria (or within 0.2 mg/L of the criteria) and that condition is due to natural conditions, then human actions considered cumulatively may not cause the DO of that water body to decrease more than 0.2 mg/L (WAC 173-201A-200(1)(d)).

WAC 173-201A-200(1)(g) provides that pH shall be within the range of 6.5 to 8.5 units with a human-caused variation within the above range of less than 0.5 units.

3.0 Fixed Site Monitoring Program

Grant PUD currently operates and maintains four water quality FSM stations that record water depth (m), barometric pressure (mm Hg), TDG (mm Hg), water temperature (°C), DO (mg/L), pH (units), and turbidity (NTU). Barometric pressure, TDG, and temperature are monitored on an hourly basis throughout the year, while DO, pH, and turbidity are monitored once every two or three weeks throughout the year. Each Grant PUD FSM station is equipped with a Hydrolab[®] Corporation Model DS5X, DS5, DS4a, MS5, or MS4a multi-parameter water quality probe that is enclosed in a submerged perforated conduit pipe. The multi-parameter probes (multi-probes) contain individual TDG, temperature, DO, pH, and turbidity sensors that are connected to a central housing system that allows for single connections, readouts, downloads, and power supplies for up to fifteen water quality sensors. At Grant PUD's FSM stations, the multi-probes are connected to an automated system that allows Grant PUD to monitor barometric pressure, TDG, and water temperature on an hourly basis. A National Institute of Standards and Technology (NIST) certified barometer located at each FSM provides the barometric pressure readings necessary to correct the partial pressure readings taken by the multi-probes (and convert TDG mm Hg to percent saturation). The multi-probes are also used to conduct periodic grab sampling of DO, pH, and turbidity and to collect quality assurance/quality controls (QA/QC) measurements at each FSM.

The data logging system at each of Grant PUD's FSM stations consist of the same basic equipment. This includes the multi-probe enclosed in a submerged perforated conduit or standpipe, which is connected to a Sutron[®] Corporation 9210 data collection platform (DCP). Multi-probes are interrogated hourly (at the top of the hour) and data are archived within the DCP. The DCPs data are then interrogated via radio transmission into Grant PUD's fiber-optic network, which then transfers the data into a secure database (using Sutron's XConnect[®] database software). Duplicates of the raw data are made available to Grant PUD's water quality web-site at <http://www.gcpud.org/naturalResources/fishWaterWildlife/waterQuality.html> (Grant PUD 2010). For additional information regarding the FSM program, see the QAPP (Hendrick 2009).

4.0 Results

The following sections provide a summary of water quality monitoring results for 2010. The hourly data can be obtained from Grant PUD's water quality web-site (Grant PUD 2010). Note that a summary of TDG data collected during the 2010 fish-spill season were presented in Keeler 2010, as required in Section 6.4.11 of the 401 WQC; therefore, those summary results are not presented in this report.

4.1 Description of 2010 Flow Characteristics

Mean daily discharge during 2010 was compared to the ten-year average (Figure 4), as measured at the U.S. Geological Survey (USGS) Streamflow gage #12472800 located 2.6 river miles downstream of Priest Rapids Dam. In general, 2010 mean daily discharges were lower than the 1999 – 2009 average (about fifteen percent lower on average).

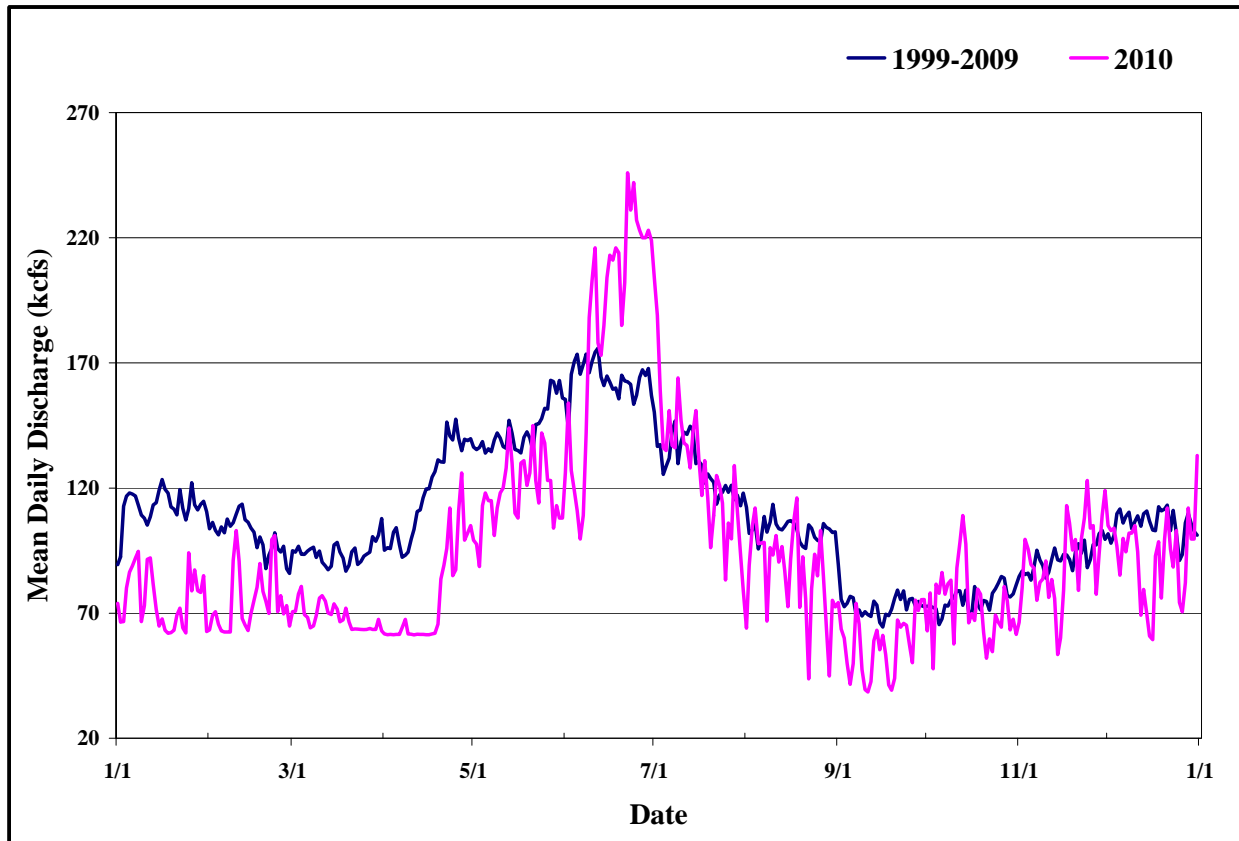


Figure 4 Comparison of 2010 vs. previous ten-year average of mean daily discharge values as measured at the U.S. Geological Survey streamflow gage #12472800 located below Priest Rapids Dam, mid-Columbia River, WA.

4.2 Total Dissolved Gas

As explained in Section 1.2.1, a modification to the WDOE water quality standards for TDG takes place during the fish-spill season, and therefore TDG monitoring results are broken into two different periods: the non-fish and fish-spill seasons.

4.2.1 Fish-Spill Season

Section 6.4.11 of the 401 WQC requires Grant PUD to submit a separate report related to TDG and fish-spill data collected during the fish-spill season (WDOE 2007). The 2010 TDG/fish-spill report was sent to WDOE on October 29, 2010 (Keeler 2010), and covers TDG monitoring results collected during the fish-spill season (April 1 – August 31).

4.2.2 Non-Fish Spill Season

As described in Section 1.2.1, for the purposes of compliance, the fish-spill season is defined by WDOE to occur from April 1 through August 31 of each year (WDOE 2007; Section 6.4.1.1(b)). Hourly TDG was collected from January 1 through December 31, 2010. Data collection, QA/QC measures, and analyses of TDG values mirrored those described in the QAPP (Hendrick 2009). For this report, data recorded during 2010 were analyzed for apparent variances from current water quality standards. Suspect or erroneous values were omitted from the analysis, but are included, as well as an explanation for omission, in Appendix A of this report. Table 1 shows the number of TDG values that were omitted from the dataset due to QA/QC issues. All of the data QA/QC problems during the 2010 monitoring year were related to low Wanapum Dam forebay water levels, causing the TDG sensor to be out of water, thus making the TDG data erroneous and inconsistent with the rest of the Columbia River system. No data were lost from January 1 through March 31, 2010. Six of the 11,712 available hrs (0.05 percent) from September 1 through December 31 were lost. Total data loss for 2010 was well within the ninety percent data completeness data quality objective as specified in the QAPP (Hendrick 2009).

Table 1 Overview of Grant PUD’s total dissolved gas data set during 2010 non-fish spill season.

Location	Data Interval	Available data collection hours	Number of omitted/lost hourly readings ¹	Percent data loss (%)
WANF	01/01 – 03/31	2,159	0	0
	09/01 – 12/31	2,928	6	0.2
WANT	01/01 – 03/31	2,159	0	0
	09/01 – 12/31	2,928	0	0
PRDF	01/01 – 03/31	2,159	0	0
	09/01 – 12/31	2,928	0	0
PRDT	01/01 – 03/31	2,159	0	0
	09/01 – 12/31	2,928	0	0
Total	01/01 – 03/31	8, 636	0	0
	09/01 – 12/31	11,712	6	0.05
All	01/01 03/31; 9/01 12/31	20,348	6	0.03
Note: WANF = Wanapum Dam forebay, WANT = Wanapum Dam tailrace, PRDF = Priest Rapids Dam forebay, PRDT = Priest Rapids Dam tailrace.				
¹See Appendix A for dates, times, and circumstances relating to omitted/lost data.				

The summary values (mean, standard deviation, minimum, and maximum) for all hourly TDG measurements taken from each FSM during the non-fish spill season are presented in Table 2.

Table 2 Summary of hourly total dissolved gas measurements from each fixed-site monitor during the 2010 non-fish-spill season, Priest Rapids Hydroelectric Project, mid-Columbia River, WA.

Location	Data Interval	Mean	Standard Deviation	Minimum	Maximum
WANF	01/01 – 03/31	100.8	3.3	94.4	109.1
	09/01 – 12/31	98.0	2.9	92.6	107.2
WANT	01/01 – 03/31	100.4	3.0	94.9	107.8
	09/01 – 12/31	98.5	3.1	92.4	109.4
PRDF	01/01 – 03/31	101.0	3.3	94.4	107.9
	09/01 – 12/31	98.1	2.7	92.7	104.1
PRDT	01/01 – 03/31	100.7	2.7	94.9	106.3
	09/01 – 12/31	99.6	3.3	92.9	105.5

Notes:
All values represent percent saturation.
WANF = Wanapum Dam forebay, WANT = Wanapum Dam tailrace, PRDF = Priest Rapids Dam forebay, PRDT = Priest Rapids Dam tailrace.

Table 3 shows the number of TDG variances from current water quality standards, as measured at each FSM station in the Wanapum forebay, Wanapum tailrace, Priest Rapids forebay, and Priest Rapids tailrace. There were no variances in TDG during the non-fish spill season for 2010. It should be noted that the WDOE defined fish-spill season began on April 1 and ended on August 31 (see Section 1.2.1), while Grant PUD spilled water for fish-passage from April 22 through August 24. Grant PUD’s fish-spill program is conducted in accordance with the requirements of the Project’s Biological Opinion (NMFS 2008) and Salmon and Steelhead Settlement Agreement (Grant PUD 2006). Figure 5 shows the daily maximum TDG readings from each twenty-four hour period during the non-fish spill season from each FSM. The hourly TDG readings from each day during the non-fish-spill seasons from each FSM can be found on Grant PUD’s water quality web-site (Grant PUD 2010).

Table 3 Number of 2010 non-fish spill season total dissolved gas variances, Priest Rapids Hydroelectric Project, mid-Columbia River, WA.

Location	From 01/01 to 3/31	From 09/01 to 12/31	Number of variances – Total	Total number of points	Percent above standard
WANF	0	0	0	5,081	0.0
WANT	0	0	0	5,087	0.0
PRDF	0	0	0	5,087	0.0
PRDT	0	0	0	5,087	0.0
Total	0	0	0	20,342	0.0

Note:
WANF = Wanapum Dam forebay, WANT = Wanapum Dam tailrace, PRDF = Priest Rapids Dam forebay, PRDT = Priest Rapids Dam tailrace.

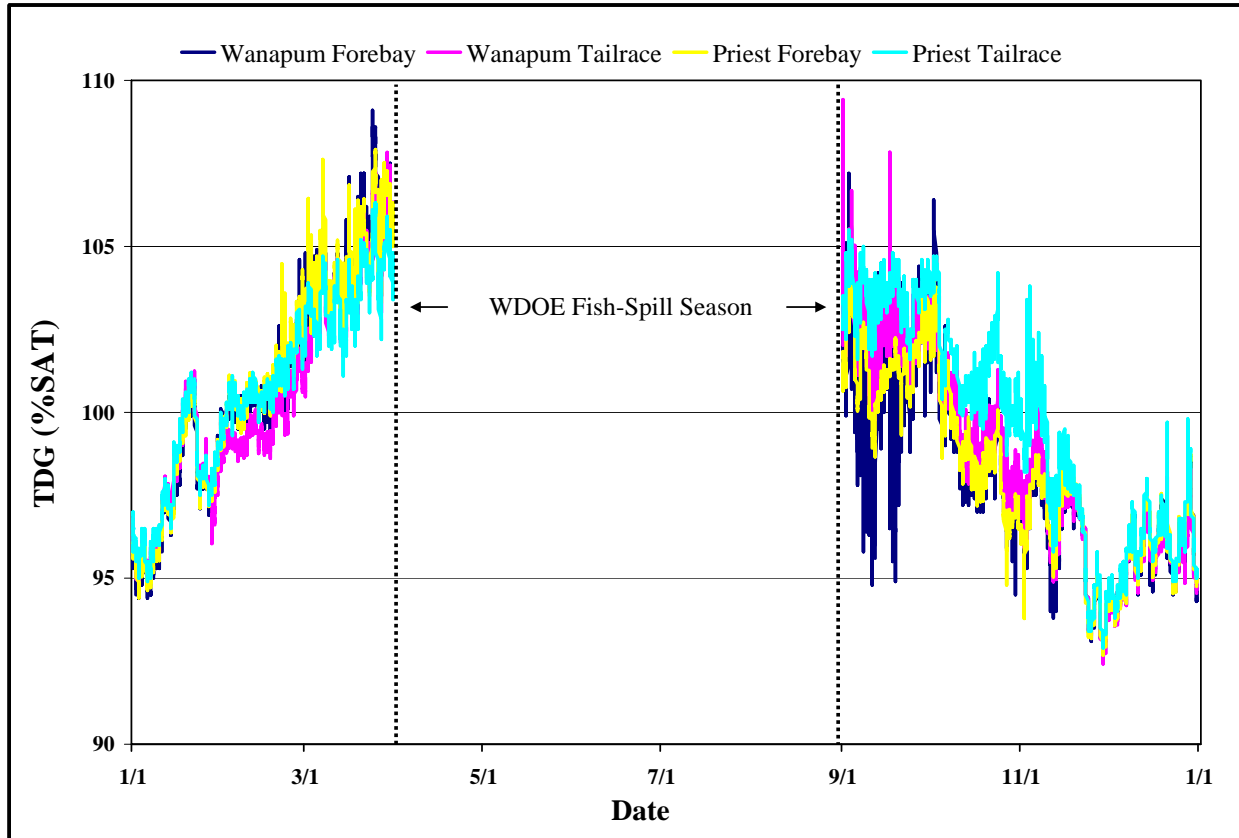


Figure 5 Daily maximum total dissolved gas values from the 2010 non-fish spill season, Priest Rapids Hydroelectric Project, mid-Columbia River, WA.

4.3 Temperature

Water temperature data were collected on an hourly basis during 2010 at each of the FSM stations within the Project. Data collection, QA/QC, and analyses of water temperature followed those described in the QAPP (Hendrick 2009). Table 4 shows the number of 1-DMax and 7-DADMax values that were omitted from the dataset due to QA/QC issues compared to the total number of available hours. Overall data loss in 2010 was zero of the combined 35,040 available hours, which was well within the 90 percent data completeness data quality objective as specified in the QAPP (Hendrick 2009).

Table 4 Overview of water temperature data set during 2010.

Location	Available hours	Number of hours omitted/lost ¹	Percent data loss (%)
WANF	8,760	0	0
WANT	8,760	0	0
PRDF	8,760	0	0
PRDT	8,760	0	0
Total	35,040	0	0

Notes:
WANF = Wanapum Dam forebay, WANT = Wanapum Dam tailrace, PRDF = Priest Rapids Dam forebay, PRDT = Priest Rapids Dam tailrace.
¹See Appendix A for dates, times, and circumstances relating to omitted/lost data.

The summary values (mean, standard deviation, minimum, and maximum) for all hourly temperature measurements taken from each FSM are presented in Table 5; Figures 6 and 7 present graphical displays of the 1-DMax and 7-DADMax values. In general, water temperatures peaked during the months of July through September. In 2002, Grant PUD funded a water temperature simulation study that examined the effects of the Project on water temperatures using the MASS1 model (Perkins et al. 2002). Results from this study found that the Project does not negatively impact water temperatures, and that the Columbia River temperatures are naturally greater than WDOE water quality standards and the Project does not create increases greater than 0.3°C (Perkins et al. 2002). In accordance with Section 6.5.2 of the 401 WQC (WDOE 2007), in 2013 Grant PUD will again use the MASS1 model to evaluate the Project compliance with temperature standards with the data collected from 2008 through 2012.

Table 5 Summary of hourly temperature measurements from each fixed-site monitor during 2010, Priest Rapids Hydroelectric Project, mid-Columbia River, WA.

Location	Data Interval	Mean	Standard Deviation	Minimum	Maximum
WANF	01/01 – 12/31	11.4	5.6	3.3	22.9
WANT	01/01 – 12/31	11.2	5.5	3.5	20.0
PRDF	01/01 – 12/31	11.4	5.5	3.6	21.5
PRDT	01/01 – 12/31	11.4	5.2	3.9	20.2
<i>Notes:</i>					
All values shown in degrees Celsius.					
WANF = Wanapum Dam forebay, WANT = Wanapum Dam tailrace, PRDF = Priest Rapids Dam forebay, PRDT = Priest Rapids Dam tailrace.					

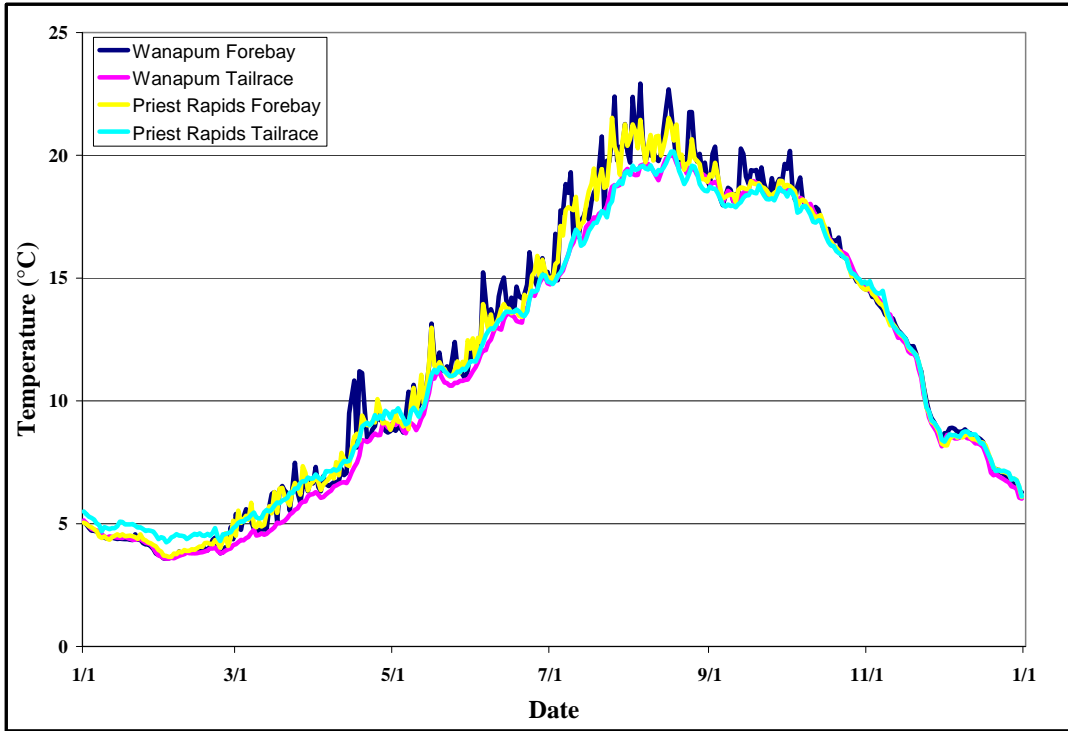


Figure 6 Daily maximum water temperature values recorded at each fixed-site monitoring station in 2010, Priest Rapids Hydroelectric Project, mid-Columbia River, WA.

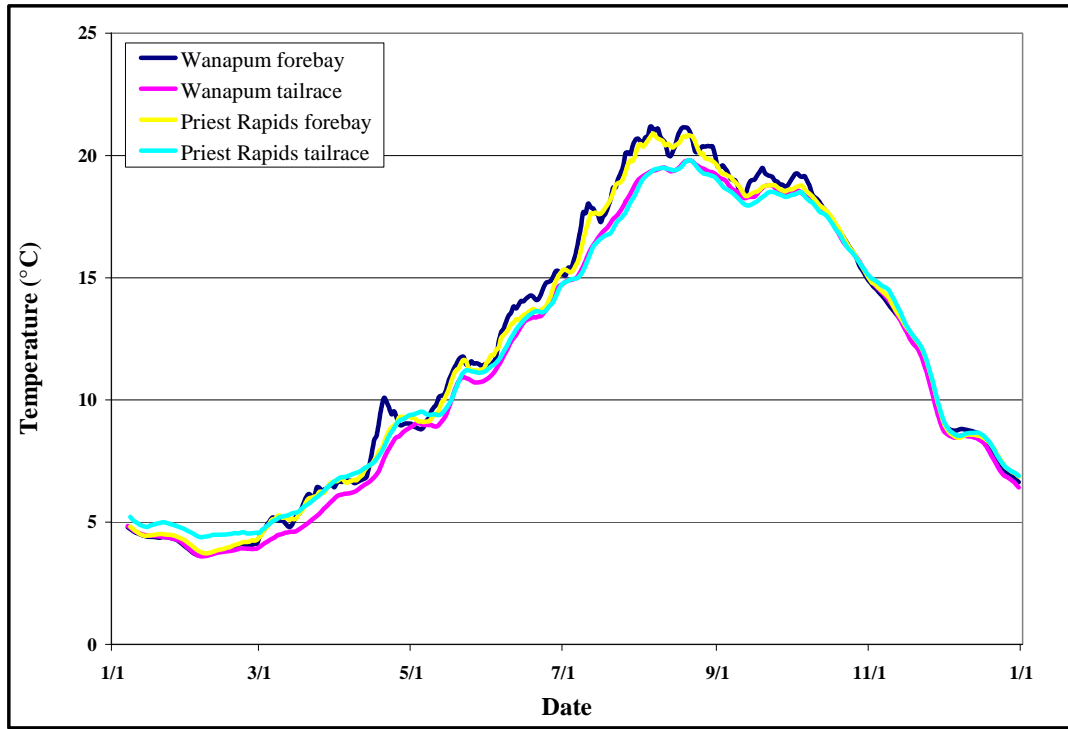


Figure 7 Seven-day rolling average of daily maximum temperatures recorded at each fixed-site monitoring station in 2010, Priest Rapids Hydroelectric Project, mid-Columbia River, WA.

4.3.1 Temperature QA/QC

Per the conditions of the QAPP (Hendrick 2009), Grant PUD performed QA/QC measures of all currently deployed Hydrolab[®] multi-probes against an NIST-certified thermometer on April 12, 2010. Multi-probes and the NIST thermometer were placed into an ice bath to verify temperature accuracy. Data collected during exposure to the ice bath were compared to the certified thermometer to ensure that the temperature sensors of each multi-probe were performing properly. Results from this analysis are shown in Table 6. As discussed in the QAPP, the accuracy/bias of the temperature sensors is $\pm 0.1^{\circ}\text{C}$, and thus the results of the ice-bath test suggests that all the sensors were within measurement quality objectives as defined in the QAPP (Hendrick 2009).

Table 6 Temperature QA/QC data collection.

Date	Probe Model	Serial	Probe Temp	Digital Thermometer	Difference
4/12/10	DS5	46027	1.19	1.06	0.13
4/12/10	DS4a	37428	1.33	1.45	-0.12
4/12/10	DS4a	39420	1.42	1.39	0.03
4/12/10	MS4a	40839	1.85	1.87	-0.02
4/12/10	DS5x	43947	1.99	1.95	0.04
4/12/10	DS4a	37535	1.05	1.15	-0.1
4/12/10	MS4a	40928	1.06	0.98	0.08
4/12/10	DS4a	37517	1.08	1.16	-0.08
4/12/10	MS5	44768	1.11	1.08	0.03
4/12/10	MS4a	42195	1.18	1.29	-0.11
4/12/10	DS5	46021	1.25	1.20	0.05
4/12/10	MS4a	42187	1.65	1.69	-0.04
4/12/10	DS5	46043	1.71	1.76	-0.05

4.4 Dissolved Oxygen, pH, and Turbidity

Summary results and values (mean, standard deviation, minimum, and maximum) from the periodic monitoring of DO, pH, and turbidity values are presented in Table 7. Data collection, QA/QC, and analyses of DO, pH, and turbidity followed those described in detail the QAPP (Hendrick 2009).

Of the data collected, no DO samples were below 8.0 mg/L at the Project FSMs. All pH values were between 6.5 and 8.5 units. Turbidity grab samples ranged from 0.0 to 6.8 for all FSM's.

Table 7 Dissolved oxygen, pH, and turbidity grab-sample results in 2010, Priest Rapids Hydroelectric Project, mid-Columbia River, WA.

Date	WANF			WANT			PRDF			PRDT		
	DO	pH	Turb	DO	pH	Turb	DO	pH	Turb	DO	pH	Turb
1/28	13.5	7.7	0.0	13.7	7.9	0.0	12.9	7.8	0.0	13.7	7.8	0.0
3/3	12.6	7.8	0.0	13.2	7.8	0.0	12.8	7.7	0.0	12.7	7.8	1.7
4/27	N/A	N/A	N/A	11.0	7.8	0.0	10.5	8.1	0.0	10.4	8.1	1.4
5/19	13.9	8.1	3.7	13.1	8.1	0.0	11.0	8.2	0.0	10.8	8.1	3.3
6/7	11.8	7.8	0.0	11.4	7.7	1.0	11.2	7.9	0.0	11.3	7.7	4.5
6/24	10.3	7.5	0.0	12.7	7.7	2.9	10.4	7.8	1.9	10.5	7.8	6.8
7/13	11.7	7.8	0.0	11.5	7.9	0.0	11.0	8.1	0.0	11.4	7.9	0.0
7/28	9.3	8.0	0.0	9.3	7.9	0.0	9.2	8.1	0.0	8.9	7.9	0.0
8/17	9.3	7.7	2.1	9.4	7.8	0.0	9.3	7.9	0.0	9.2	7.7	0.0
9/20	10.3	7.8	3.2	10.4	7.9	2.8	10.2	7.9	1.8	10.2	7.7	0.5
10/11	10.3	7.9	1.8	10.5	7.9	0.7	10.5	7.9	0.5	10.4	8.1	0.0
11/11	9.8	7.7	0.0	9.8	7.7	0.0	9.9	7.7	0.0	9.9	7.6	0.0
12/15	10.6	8.3	2.0	10.4	8.0	0.4	10.3	8.4	2.0	10.6	8.0	2.2
Mean	11.1	7.8	1.1	11.3	7.9	0.6	10.7	8.0	0.5	10.8	7.9	1.6
Min.	9.3	7.5	0.0	9.3	7.7	0.0	9.2	7.7	0.0	8.9	7.6	0.0
Max.	13.9	8.3	3.7	13.7	8.1	2.9	12.9	8.4	2.0	13.7	8.1	6.8
Stdev.	1.6	0.2	1.4	1.5	0.1	1.0	1.1	0.2	0.8	1.3	0.2	2.1

Notes:

WANF = Wanapum Dam forebay, WANT = Wanapum Dam tailrace, PRDF = Priest Rapids Dam forebay, PRDT = Priest Rapids Dam tailrace.

N/A = Missed Grab Sample Data.

5.0 Conclusions

Water quality data collected in 2010 at Grant PUD’s FSM stations included hourly TDG and water temperature data and periodic grab-samples of DO, pH, and turbidity. Results indicated no exceedances of the 110 percent TDG standard during the non-fish spill season (see Keeler (2010) for information related to TDG monitoring during fish-spill season). There were two 1-DMax temperature values greater than 20°C recorded below Priest Rapids Dam and 359 7DADMax values greater than 17.5°C recorded at Grant PUD’s four FSM stations. In accordance with Section 6.5.2 of the 401 WQC (WDOE 2007), Grant PUD will conduct temperature modeling in 2013 to determine Grant PUD’s contribution, if any, to water temperature values recorded from 2008–2012 that were above WDOE water quality standards. Grant PUD will continue its hourly TDG and water temperature monitoring as well as periodic DO, pH, and turbidity monitoring at its FSM stations in 2011, according to conditions contained in the 401 WQC (WDOE 2007) and the QAPP (Hendrick 2009).

Grant PUD plans to continue efforts in 2011 to assure minimal data loses. These efforts include following the QAPP, which outlines standardized equipment calibration/maintenance, data collection, and data management procedures that are meant to achieve data completeness targets of greater than 90 percent (Hendrick 2009).

Literature Cited

- FERC (Federal Energy Regulatory Commission). 2008. Order Issuing New License for Public Utility District No. 2 of Grant County, 123 FERC ¶ 61,049, Washington D.C.
- Grant PUD (Public Utility District No. 2 of Grant County). 2006. Priest Rapids Project Salmon and Steelhead Settlement Agreement, FERC Project No. 2114, Ephrata, Washington.
- Grant PUD (Public Utility District No. 2 of Grant County, Washington). 2010. Hourly Total Dissolved Gas and Water Temperature Data for the Priest Rapids Hydroelectric Project. Public Utility District No. 2 of Grant County, Ephrata, Washington.
<http://www.gcpud.org/naturalResources/fishWaterWildlife/waterqualityMonitoring.html>.
- Hendrick, R. 2009. Quality Assurance Project Plan for Monitoring Selected Water Quality Parameters within the Priest Rapids Hydroelectric Project. Public Utility District No. 2 of Grant County, Ephrata, WA.
<http://www.gcpud.org/resources/resLandWater/waterQuality.htm>
- Keeler, C. 2010. Summary of 2010 annual fish spill and total dissolved gas monitoring. Public Utility District No. 2 of Grant County, Ephrata, WA.
- NMFS (National Marine Fisheries Service). 2008. Endangered Species Act – Section 7 Consultation Biological Opinion and Magnuson-Stevens Fishery Conservation and Management Act Consultation for the New License for the Priest Rapids Hydroelectric Project, FERC Project No. 2114, Portland, Oregon.
- Perkins, W. A., M. C. Richmond, C. L. Rakowski, A. Coleman, and G. R. Guensch. 2002. Effects of Wanapum and Priest Rapids impoundments on Columbia River temperature. Battelle Pacific Northwest Division, Richland, Washington. Report prepared for Public Utility District No. 2 of Grant County, Ephrata, Washington.
- WDOE (Washington Department of Ecology). 2007. Section 401 Water Quality Certification Terms and Conditions for the Priest Rapids Hydroelectric Project, FERC Project No. 2114, Spokane, Washington.

Appendix A
Omitted Data Explanations 01/01 – 03/31/10 and 09/01 – 12/31/10

Table A-1 Hourly data points/sections omitted from the fixed-site monitoring data set, non-fish spill season, 2010.

Location	Date(s)	hr(s)	Problem/reason for omission	Comments/action taken to correct problem
WANF	9/12/10	4:00-9:00	Suspect TDG values	low forebay water elevations, sensor out of water, cleaned out standpipe and lowered probe
<i>Note: WANF = Wanapum Dam forebay, WANT = Wanapum Dam tailrace, PRDF = Priest Rapids Dam forebay, PRDT = Priest Rapids Dam tailrace.</i>				